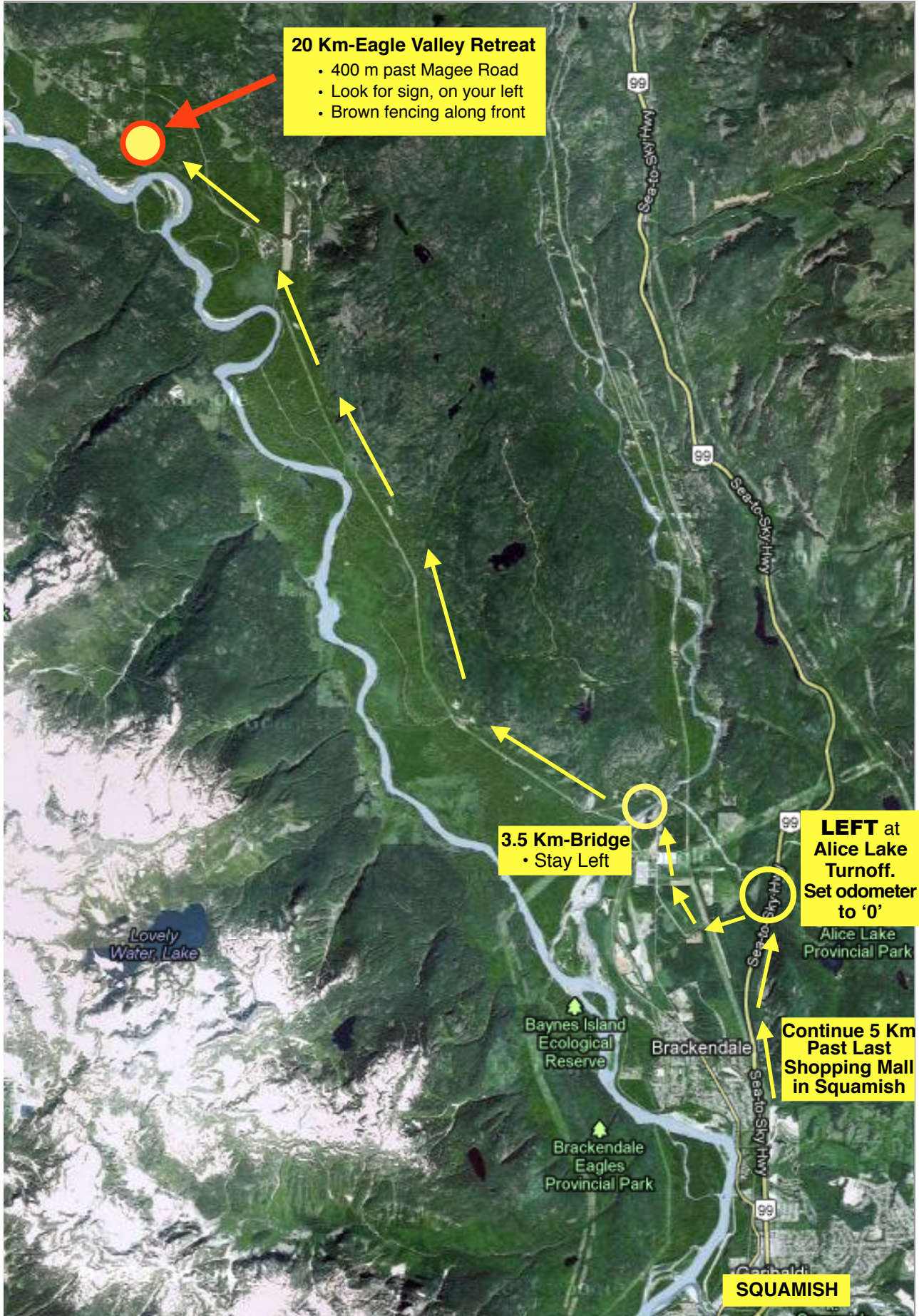


# Getting to EVR



**20 Km-Eagle Valley Retreat**

- 400 m past Magee Road
- Look for sign, on your left
- Brown fencing along front

**3.5 Km-Bridge**

- Stay Left

**LEFT at Alice Lake Turnoff.**

- Set odometer to '0'

**Continue 5 Km Past Last Shopping Mall in Squamish**

**SQUAMISH**



## **Directions from Vancouver**

### **Overview:**

Using Broadway and Burrard as a reference point, it is approximately 90 km and 90 min to Eagle Valley Retreat. The simple distance formula is:

- **Stage 1:** 60 km to Squamish from Vancouver
- **Stage 2:** Drive **5 Km** through Squamish until the last Mall. You will be at a stop light with Extra Foods on your right.
- **Stage 3:** Drive **5 Km** past the last Mall (Extra Foods) as if you are headed to Whistler. Look for the **Alice Lake turnoff sign** (on your right)
- **Stage 4:** Turn **LEFT** at **Alice Lake turnoff**, and proceed down Squamish Valley Road for 20 km.
- **Stage 5:** Approx **20 km** down Squamish Valley Road, on your left

### **Detailed Directions:**

1. Find your way to the Upper levels Highway (**Highway #1**) heading **West** to Horseshoe Bay and then join **Highway #99** North to Squamish.
2. Drive through Squamish (5 traffic lights). After the last traffic light (At mall with Extra Foods to your right) you will begin heading up to Whistler. 5 km after that last light you will see the **Alice Lake Turnoff** on your right. **TURN LEFT** here onto Squamish Valley Road. **PULL OVER HERE. SET or MARK YOUR TRIP ODOMETER TO ZERO.**
3. **Within 1 Km**, the road will curve right. After approx **3.5 km** you will cross a bridge over the Cheakamus River (at Sun Wolf & Fergie's Diner). After you cross the bridge, **STAY LEFT** onto Squamish Valley Road. You will see **speed bumps**: Slow down to protect your vehicle.
4. Stay on Squamish Valley Road for another **16.5km** until your ODOMETER reads approx **20km** (from where you set it at the start at Alice Lake turnoff). Look for our sign **on your LEFT**. You will be at the entrance to Eagle Valley Retreat. The property is easy to notice as it has a long brown ranch-style fence along the entire 100 meter frontage.
5. Drive in and steer right into our gravel parking area. Look for the pathway up

**Eagle Valley Retreat Phone #**  
**1-604-892-9883**